

Sharpdesk Mobile Operation Manual

for iPhone

SHARP CORPORATION

March 6, 2012

Table of Contents

1	Overview.....	3
2	Operational Environment.....	4
3	Install and Start.....	5
4	Set Up Printer/Scanner.....	6
5	Set Up User Information.....	9
6	Scan.....	10
7	Print.....	12
7.1	Print a Scanned Document.....	12
7.2	Print a Photo Image.....	14
8	Send to E-mail.....	16
9	Send to Application.....	17
10	Organize.....	18
11	Print from External Application.....	19

App Store is a service mark of Apple Inc.

Apple, the Apple logo, iPhone and Bonjour are trademarks of Apple Inc., registered in the U.S. and other countries.

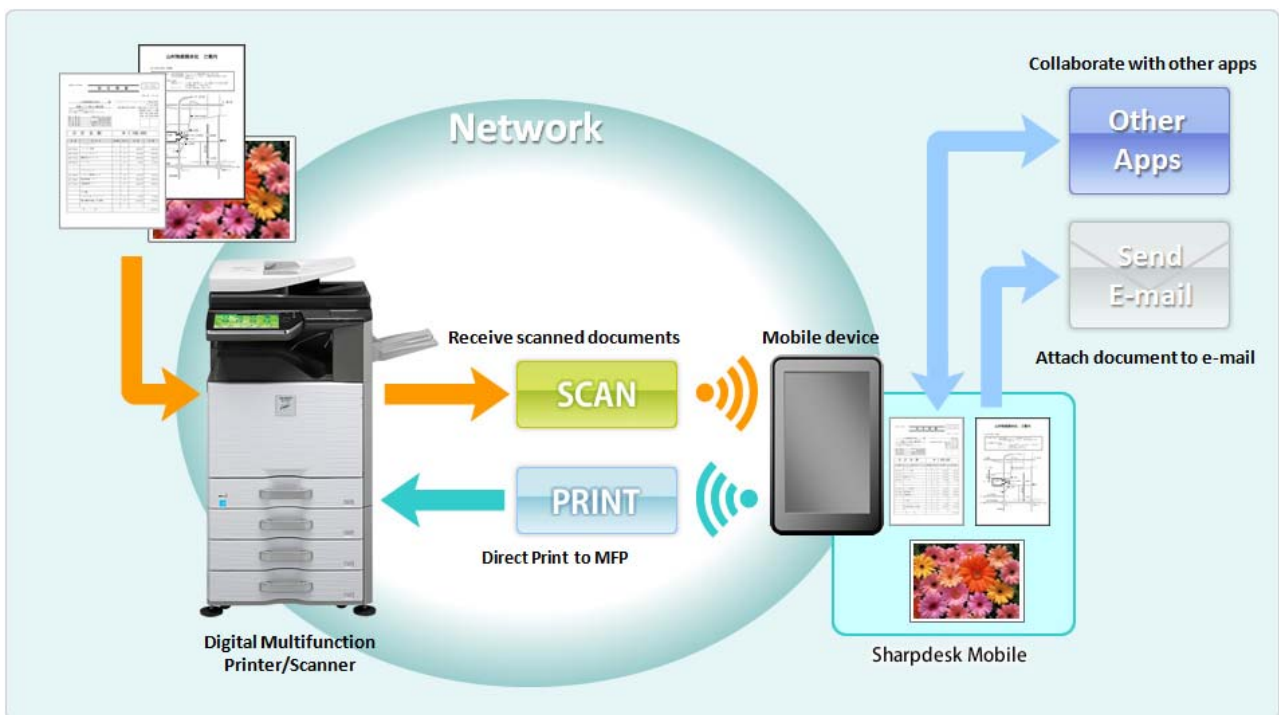
IOS is a trademark or registered trademark of Cisco in the U.S. and other countries and is used under license by Apple Inc.

Sharpdesk is a trademark or registered trademark of Sharp Corporation in the U.S. and other countries.

1 Overview

This product is an application that

- Receives, previews and stores scanned documents from your scanner to your mobile device (hereafter it is called device)
- Prints the documents and photos stored in the device to your printer
- Attaches the scanned documents stored in this application to e-mail, and sends and utilizes the documents to other application in the device



2 Operational Environment

This application can be installed and used on the following mobile devices (note 1):

iPhone 4, iPhone 4S, iPad, iPad 2 (for the operation on iPad and iPad 2, see Operation Manual for iPad)

iOS version: 4.3 or 5.0

(note 1) Your device is necessary to be connected to Wi-Fi network.

The following Sharp MFPs can be used to scan documents to / print documents from your mobile device (note 2)(note 3):

MX-2310U (note 4), MX-3111U (note 4)

MX-2610N, MX-3110N, MX-3610N,

MX-4110N, MX-4111N, MX-5110N, MX-5111N

(note 2) Your MFPs are necessary to be connected to your network. PS3 Expansion Kit is also necessary to be installed to print PDF files from this application.

(note 3) This application is not able to print if user authentication is enabled on your MFP.

(note 4) As for MX-2310U and MX-3111U, Printer Expansion Kit is necessary to be installed to print from this application. PS3 Expansion Kit is also necessary to be installed to print PDF files from this application.

This application can handle the following file formats (note 5):

JPEG, TIFF, PDF

(note 5) Maximum length of file names of these file formats that this application can handle depends on the specification of iOS.

This application uses Bonjour, FTP and HTTP for searching MFPs on the network, receiving scanned data from MFPs and printing to MFPs.

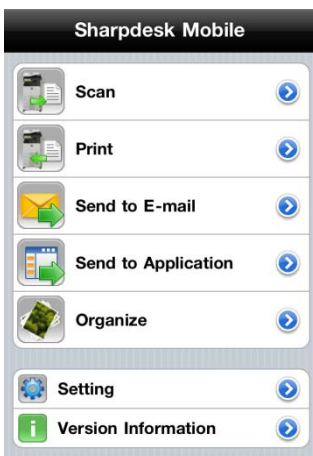
3 Install and Start



- I. Download this application from App Store and install.
This application is categorized as “Utility.” User can search this application in App Store by entering “Sharpdesk Mobile.”
- II. Tap the “Sharpdesk M” icon to start this application.



- III. The splash screen is displayed.



- IV. After the splash screen disappears, Top Menu screen is displayed.

4 Set Up Printer/Scanner

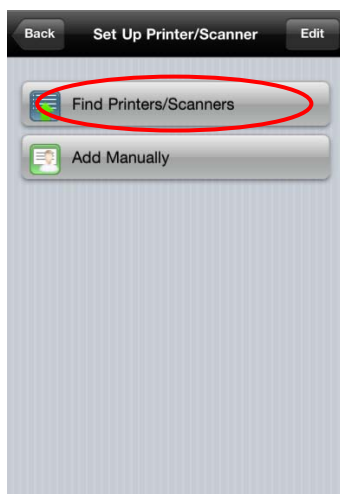
After starting this application, set up the printers to print from the device and the scanners from which the device receives scanned data.



I. Tap "Setting" on Top Menu screen.



II. Tap "Set up Printer/Scanner."



III. Tap "Find Printers/Scanners."

Printers and scanners on the network are searched and listed automatically.

(note) For "Find Printers/Scanners," the MFPs must be on the same segment of the network where the device is connected. If you use scanners/printers on the different segments of the network, see Step IX of this chapter (page 8) to add manually.



IV. Printers and Scanners searched from the network are displayed as list.



V. Tap the specific scanner/printer if you wish to check its information.





VI. The information of selected printer/scanner is displayed. Tap "Port Number" to change port number.



VII. Tapping “Edit” button enables user to delete and arrange order of the printer/scanner.



VIII. Tapping  enables user to delete a printer/scanner from the list.

Also, tapping  and moving the finger up and down enables user to arrange order of the printers/scanners.



IX. Tap “Add Manually” if you wish to add any printers/scanners that cannot be added on “Find Printers/Scanners.”

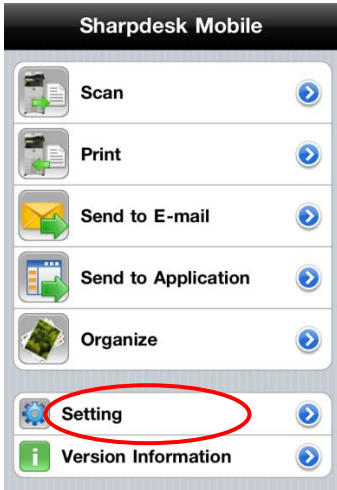


X. Enter IP address and port number to add a printer/scanner.
(note) Port number is necessary for print from the device. Enter the same port number as configured on the printer. If different port number is entered, this application cannot print to the printer. To check the port number in the printer, see [Application Settings]-[Setting for Print from the PC]. The default port number for both printer and device is 21.
Also, FTP print has to be enabled on the printer.

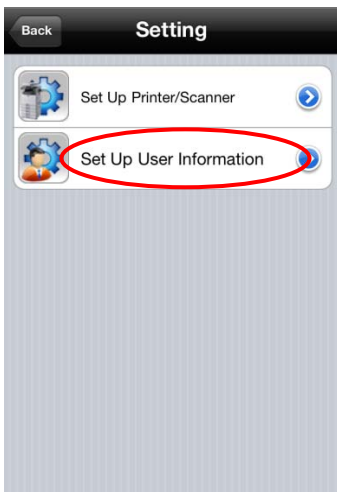
5 Set Up User Information

Set up the user information for letting the scanner display the scan destination when the device receives scanned data from the scanner.

- I. Tap "Setting" on Top Menu screen.



- II. Tap "Set up User Information".



- III. Set up "Display Name" for letting scanner display it as scan destination when the device receives scanned data from the scanner. The default value is same as the value of "Name" in the device's user information.

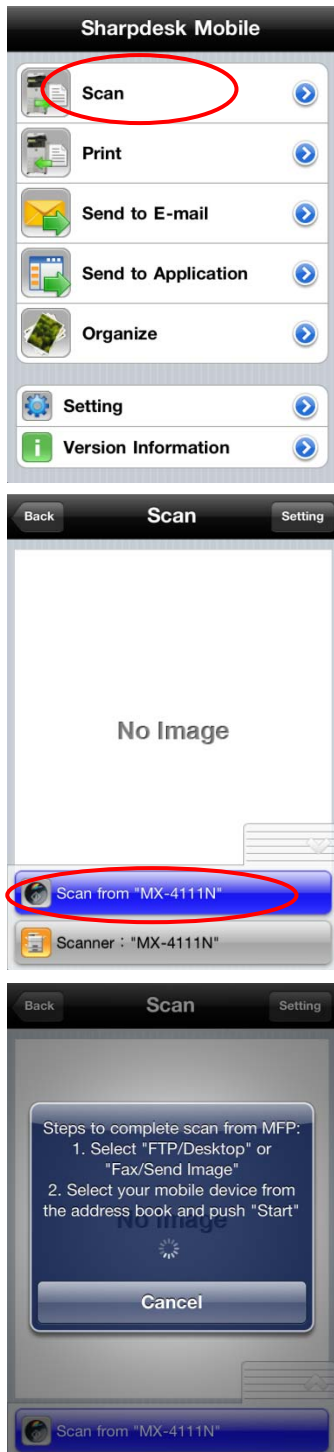
"Character Search" is used for the sort key on displaying "Display Name" in the address book screen of the scanner. Set to "I(ON)" in "Profile Automatic Delete" if deleting the destination on the scanner after scan is completed.



6 Scan

This function receives the documents scanned by selected scanner and stores them in the device.

(note) Resolution, file format and other scan settings must be done in the MFP operation panel when scanning. (see step IV of page 11)



I. Tap "Scan" on Top Menu screen.

II. Tap "Scan from (scanner name)".

(note) Please be sure address book is not displayed in the operation panel of the scanner. If address book is displayed in the operation panel, device may not be in the waiting state. (See next step)

III. The popup is displayed and the device is in the waiting state.



IV. Set the document on the scanner and configure resolution, file format, color mode or other settings. Select the destination on “Address Book” in “Fax/Image Send” so that the destination is the same as “Display Name” configured in Chapter 5 of page 9, “Set up User Information.” Push Start button on the scanner to execute scanning.



V. Scanned data is sent to the device and the device stores the data into the memory. If multiple scanned data is received, the list of scanned data is listed. Tap “Save” in the right side of “Scan” title bar to store these data.

(note) Tap any data to preview received data from the list. However, this data can only be stored together with the rest of the received data.



VI. If a single data is received, the content of the data is displayed.

Tap “Save this Image” button at the bottom of the screen to store this data in the application.

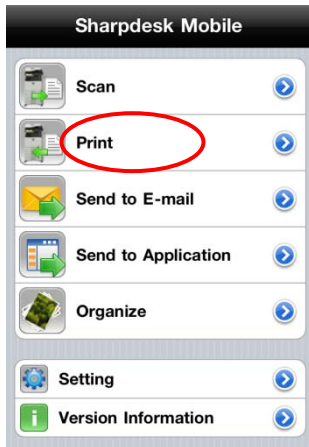
7 Print

Scanned documents and photo images stored in this application can be printed.

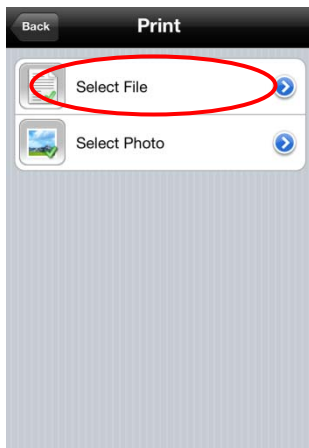
Supported file formats are JPEG, PDF and TIFF.

(note) No documents or images can be printed if user authentication is enabled on MFP.

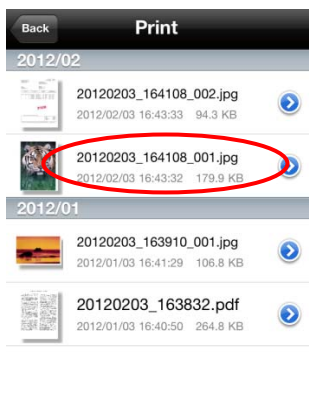
7.1 Print a Scanned Document



I. Tap "Print" on Top Menu screen.

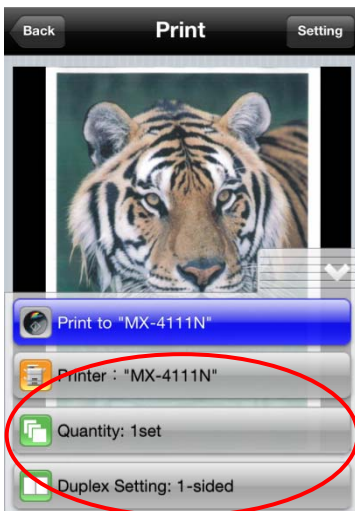


II. Tap "Select File".



III. Scanned documents stored by "Scan" function (See Chapter 6 of page 10) and documents sent from another application (See Chapter 11 of page 19) are listed by year/month at the time of the scanning.

Tap the data to preview contents of the data.



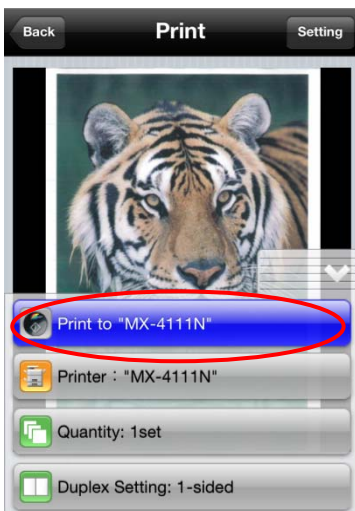
IV. Select the printer to print and configure print quantity and duplex setting.

Quantity can be configured from 1 set to 99 sets.

Simplex/Duplex can be configured in "Duplex Setting."

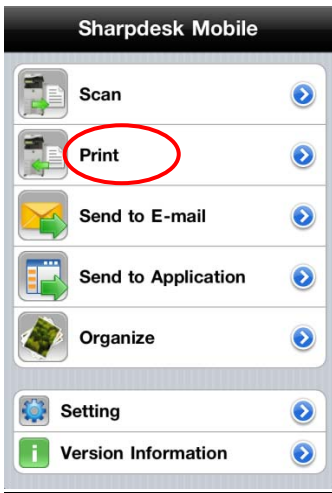
Regarding 2-sided print, it can be configured along with binding direction of Tablet or Book.

(note) other settings than quantity and duplex setting cannot be configured.

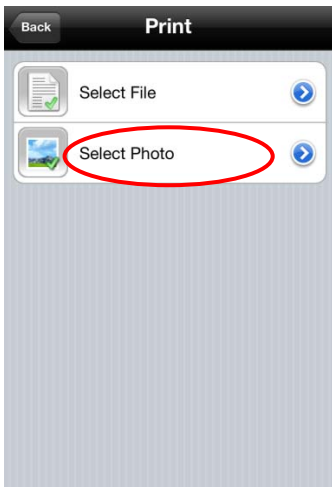


V. Tap "Print to (printer name)" to print.

7.2 Print a Photo Image



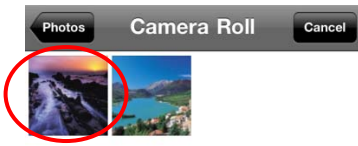
I. Tap "Print" on Top Menu screen.



II. Tap "Select Photo".



III. The photo images stored in Photos or Photo Album are listed.



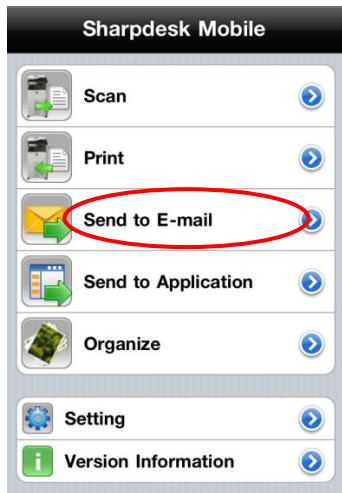
IV. Tap any thumbnail to preview the image.



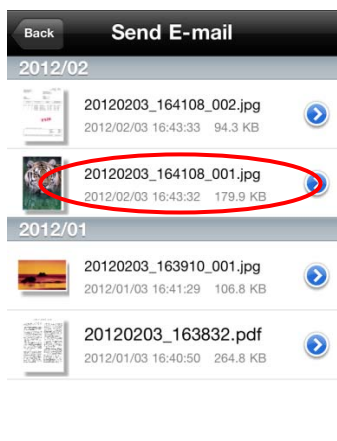
V. Tap the tab on the upper-right corner of “Print to (printer name)” button to select printer to print and configure quantity and duplex/simplex (same as Print a Scanned Document). Tap “Print to (printer name)” to print.

8 Send to E-mail

The scanned document stored in the device can be attached to E-mail.

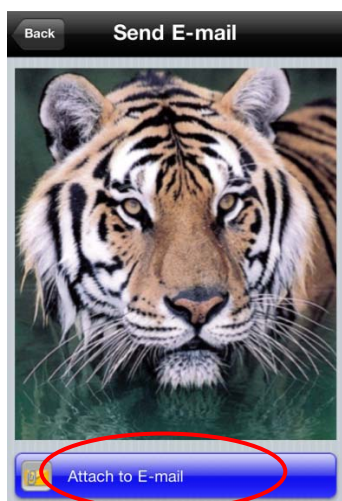


I. Tap "Send to E-mail" on Top Menu screen.



II. The scanned documents stored in the device by Scan function (See Chapter 6 of page 10) and documents sent from another application (See Chapter 11 of page 19) are listed by year/month at the time of the scanning.

Tap any document to preview.



III. The content of the selected document is displayed.

Tap "Attach to E-mail" at the bottom of the screen.

E-mail application is invoked and the e-mail that the document is attached is displayed.

Send the e-mail after editing it.

9 Send to Application

The scanned documents stored in this application can be sent to other application.



I. Tap "Send to Application" on Top Menu screen.

II. The scanned documents stored in the device by Scan function (see Chapter 6 of page 10) and documents sent from another application (See Chapter 11 of page 19) are listed by year/month at the time of scanning. Tap any document to preview.



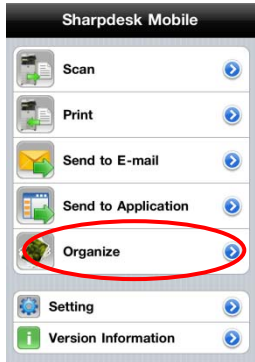
III. The content of the selected document is displayed. Tap "Send to Application" at the bottom of the screen.



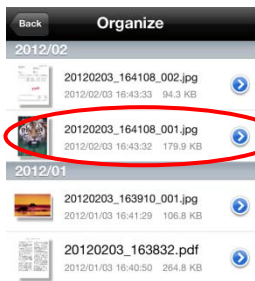
IV. The applications that this data can be sent are listed. Tap any application to send this data to then the application is invoked.

10 Organize

The scanned data stored in the application can be organized.



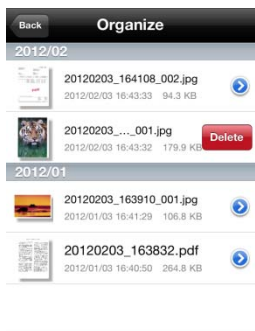
I. Tap “Organize” button on Top Menu screen.



II. The scanned documents stored by “Scan” function (See Chapter 6 of page 10) and documents sent from another application (See Chapter 11 of page 19) are listed by year/month at the time of scanning. Tap any document to preview its image.



III. Tap “Delete this File” at the bottom of the screen to delete this data.

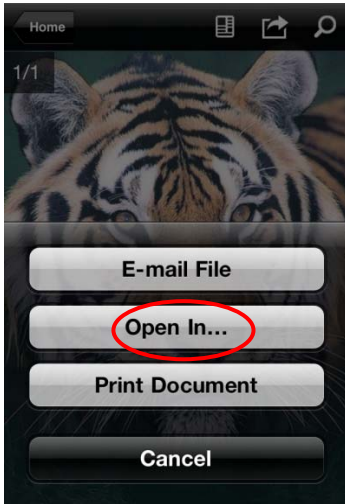


IV. Swiping the document in the list also enables user to delete it.

11 Print from External Application

The data sent from other application in the device can be printed by this application.

- I. Open the file that you wish to print (JPEG, PDF or TIFF) in other application.



- II. Tap "Open In..." to send the file to another application. "Sharpdesk M" is listed as one of the applications that can receive this file.

Then tap "Sharpdesk M".



- III. The rest of the operation is the same as step IV and after of "Print a scanned document" in Chapter 7 of page 12.